

Always. Reliable. Tight.

Single wall insert with integrated patch flange

for setting in concrete

HSI150 1x(z) K AF/X

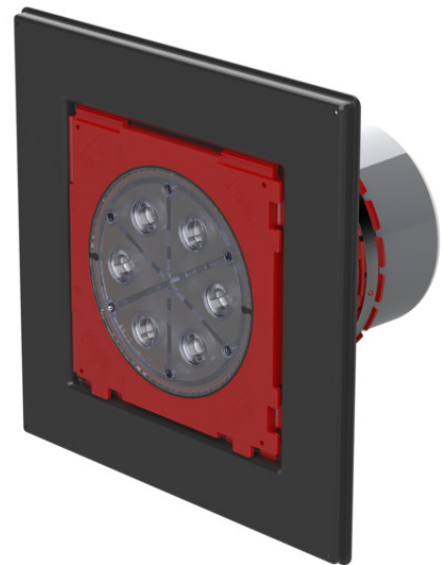
Article no.: xxxxx



- **Integrated patch flange for processing plastic-modified bitumen thick coatings**

- **1x1 or 1x4 package configuration**
- **Quality mark: sealed ex works. Option to check for unintentional or unauthorised opening of the closing cover**

For the gastight and watertight connection on one side of system seals for cables or cable ducts and a high level of flexibility for subsequent use.



Picture may differ from selected product

FACTS

Application range:

- DIN 18533 W1.1-E, DIN 18533 W1.2-E, DIN 18533 W2.1-E
- Waterproof concrete stress class 1, Waterproof concrete stress class 2

Advantages:

- System seal can be connected on one side (e.g. cable duct connection or cable seal)
- Simple installation in the formwork using the pre-drilled nail holes.

Scope of delivery:

- pressure-tight cover

Dimensions:

- Frame dimensions 1x1 package configuration: 340 x 340 mm
- Frame dimensions 1x4 package configuration: 970 x 340 mm
- Minimum wall thickness 100 mm

Material:

- ABS with TPE 3-ribbed seal
- Adapter pipe: PVC
- Closing cover: ABS with TPE seal
- Integrated patch flange: ABS

Tightness:

- Gastight and watertight

PICTURES

