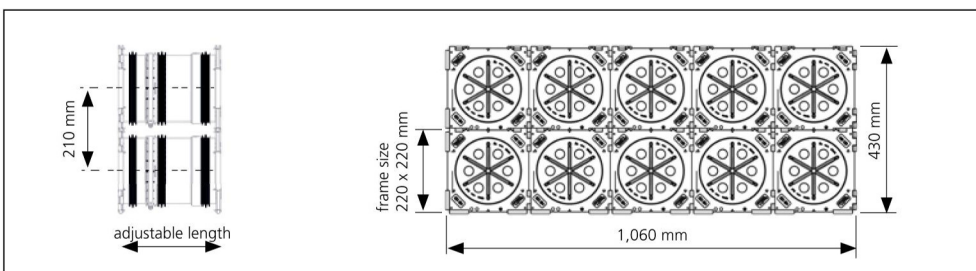


## WALL INSERTS AND POLYMER FLANGE

### DOUBLE WALL INSERT, ADJUSTABLE LENGTH FOR SETTING IN CONCRETE

#### Features and technical data:

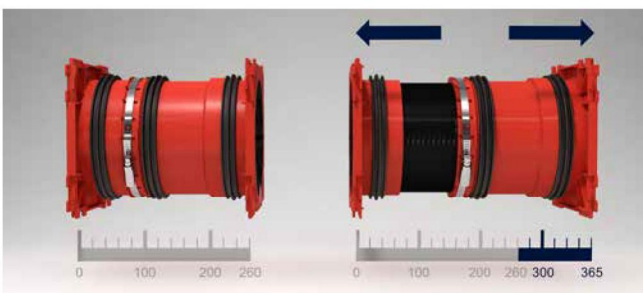
- waterproof concrete stress class 1, stress class 2
- continuously adjustable to the required wall thickness on site
- push fit socket frame system for block assembly on site
- connection of system seals possible on both sides
- attachment of system covers for sealing of cables and for connecting smooth and corrugated ducts
- available for double walls/element walls



### SINGLE WALL INSERT WITH RUBBER PUSH FIT SOCKET SEALS, ADJUSTABLE LENGTH FOR SETTING IN CONCRETE AND CONNECTING SMOOTH CABLE DUCTS

#### Features and technical data:

- waterproof concrete stress class 1, stress class 2
- continuously adjustable to the required wall thickness on site
- push fit socket frame system for block assembly on site
- connection of system seal possible on one side and integrated push fit socket for connection of smooth cable ducts on the other side



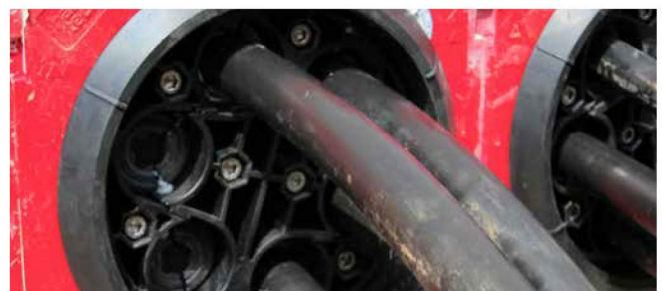
continuously adjustable to the required wall thickness, example HSI150 1x1 K2 Varia 260-365



connection of the cable entry system KES MA150 D



HSI150 GSM Varia applied as a block




sealing with system cover HSI150 DG




Cable entries 150

## WALL INSERTS AND POLYMER FLANGE

Cable entries

<b>HSI150 K2 VARIA – CABLE ENTRY</b>				
Figure	Suitable for wall thickness (mm)	Article code	Article number	GTIN
<b>Double wall insert</b>				
	200 – 260	<b>HSI 150 x1 K2 Varia 200-260</b>	3030300084	4052487135009
	260 – 365	<b>HSI150 1x1 K2 Varia 260-365</b>	3030300085	4052487134231
	365 – 470	<b>HSI150 1x1 K2 Varia 365-470</b>	3030300086	4052487140430
	470 – 575	<b>HSI150 1x1 K2 Varia 470-575</b>	3030300087	4052487140454

Including hex key for adjusting the installation length.

<b>HSI150 GSM VARIA – CABLE ENTRY</b>				
Figure	Suitable for wall thickness (mm)	Article code	Article number	GTIN
<b>Single wall insert with integrated push fit socket for cable duct OD 110 mm</b>				
	200 – 260	<b>HSI150 1x1 GSM110 Varia/200-260</b>	2120206120	4052487153577
	260 – 365	<b>HSI150 1x1 GSM110 Varia/260-365</b>	2120206126	4052487153584
	365 – 470	<b>HSI150 1x1 GSM110 Varia/365-470</b>	2120206136	4052487153591
	470 – 575	<b>HSI150 1x1 GSM110 Varia/470-575</b>	2120206147	4052487153607
<b>Single wall insert with integrated push fit socket for cable duct OD 125 mm</b>				
	200 – 260	<b>HSI150 1x1 GSM125-Varia/200-260</b>	2120206220	4052487153614
	260 – 365	<b>HSI150 1x1 GSM125-Varia 260-365</b>	2120206226	4052487153621
	365 – 470	<b>HSI150 1x1 GSM125-Varia 365-470</b>	2120206236	4052487153638
	470 – 575	<b>HSI150 1x1 GSM125-Varia 470-575</b>	2120206247	4052487153645
<b>Single wall insert with integrated push fit socket for cable duct OD 160 mm</b>				
	260 – 320	<b>HSI150 1x1 GSM160 Varia 260-320</b>	2120206326	4052487153652
	320 – 425	<b>HSI150 1x1 GSM160 Varia 320-425</b>	2120206332	4052487153669
	425 – 530	<b>HSI150 1x1 GSM160 Varia 425-530</b>	2120206342	4052487153676
	530 – 635	<b>HSI150 1x1 GSM160 Varia 530-635</b>	2120206353	4052487153683

Including hex key for adjusting the installation length.

When installing packages of HSI150 wall insert, we recommend the use of spacer HSI AH40 for increasing the axial spacing.

In case of GSM160 it is mandatory to use the spacer.



For matching accessories, such as spacer to enlarge the axial spacing to 250 mm, please see page 32 onwards.





## WALL INSERTS AND POLYMER FLANGE

### SINGLE WALL INSERT FOR SETTING IN CONCRETE

#### Features and technical data:

- waterproof concrete stress class 1, stress class 2
- system covers and seals can be connected on one side
- minimum wall thickness 70 mm
- blind cover and blind plate (to be knocked out) guarantee double safety for wall thicknesses 70 – 150 mm (in 10 mm steps)
- available in individual wall thicknesses > 150 mm
- push fit socket frame system for block assembly
- pressure-tight up to 2.5 bar, after concreting

### DOUBLE WALL INSERT FOR SETTING IN CONCRETE

#### Features and technical data:

- waterproof concrete stress class 1, stress class 2
- system covers and seals can be connected on both sides
- minimum wall thickness 100 mm
- available in individual wall thicknesses > 100 mm
- push fit socket frame system for block assembly, available ex stock
- closed on both sides with blind system cover
- special designs for double wall/element walls available
- pressure-tight up to 2.5 bar, after concreting

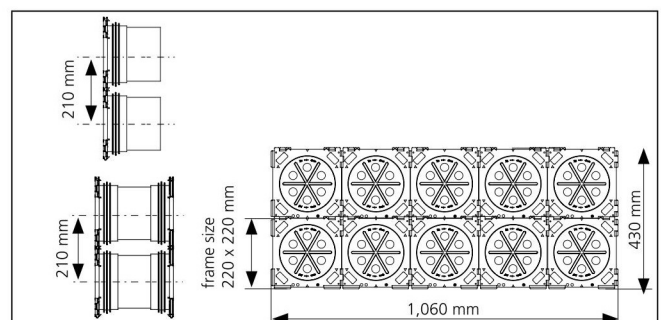
### SINGLE WALL INSERT WITH RUBBER PUSH FIT SOCKET FOR SETTING IN CONCRETE AND CONNECTING SMOOTH CABLE DUCTS

#### Features and technical data:

- waterproof concrete stress class 1, stress class 2
- system covers and seals can be connected on one side
- integrated push fit socket for connecting smooth cable ducts on one side;
- no additional pipe components required
- minimum wall thickness with pipe connection diameter 110 mm and diameter 125 mm: 120 mm
- minimum wall thickness for pipe connection diameter 160 mm: 180 mm
- maximum wall thickness 500 mm
- pressure-tight up to 0.5 bar, depending on the cable duct used



double wall insert HSI150 as block assembly



example 2x5 block for 200 mm wall thickness: article code: HSI150 2x5 K2/250

# WALL INSERTS AND POLYMER FLANGE

HSI150 – WALL INSERT	
Figure	Article code
<b>Single wall insert minimum wall thickness 70 mm</b>	
	HSI150 1x1 K/X*1
<b>Double wall insert minimum wall thickness 100 mm</b>	
	HSI150 1x1 K2/X*1
<b>Single wall insert with integrated push fit socket diameter ID 110 mm, minimum wall thickness 120 mm</b>	
	HSI150 1x1 GSM110/X*1*2
<b>Single wall insert with integrated push fit socket diameter ID 125 mm, minimum wall thickness 120 mm</b>	
	HSI150 1x1 GSM125/X*1*2
<b>Single wall insert with integrated push fit socket diameter ID 160 mm, minimum wall thickness 180 mm, block assembly only in conjunction with spacer</b>	
	HSI150 1x1 GSM160/X*1

\*1 The article numbers for the exact wall thicknesses can be found at: [www.hauff-technik.com](http://www.hauff-technik.com)  
Standard wall thickness: max. up to 500 mm (gradation in 10 mm)

\*2 Restrictions regarding number and size of cables may apply.



Matching accessories such as spacers to enlarge axial spacing to 250 mm or the flexible socket wrench to install and uninstall the system cover are to be found from page 32 onwards.

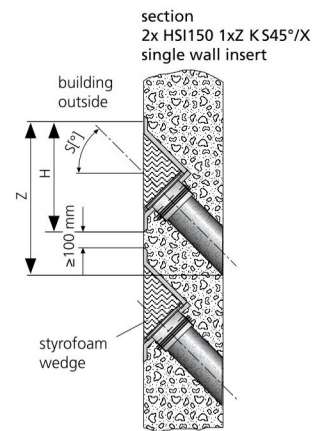


## WALL INSERTS AND POLYMER FLANGE

### SLANTED SINGLE WALL INSERT FOR SETTING IN CONCRETE

#### Features and technical data:

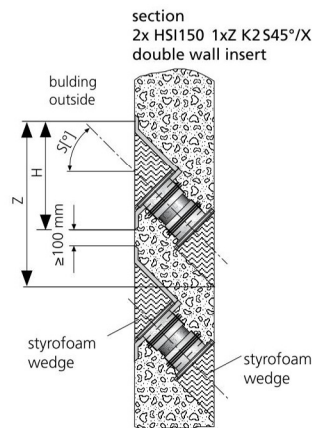
- waterproof concrete stress class 1, waterproof concrete stress class 2
- for inclined building entry in all directions for an optimum bend radius
- can be customised for individual wall thickness
- system covers and seals can be connected on one side
- packages can be created ex works (single row)
- 2.5 bar pressure-tight right after concreting





### SLANTED DOUBLE WALL INSERT FOR SETTING IN CONCRETE

#### Features and technical data:




- waterproof concrete stress class 1, waterproof concrete stress class 2
- for inclined building entry in all directions for an optimum bend radius
- can be customised for individual wall thickness
- system covers and seals can be connected on both sides
- packages can be created ex works (single row)
- 2.5 bar pressure-tight right after concreting



## WALL INSERTS AND POLYMER FLANGE

HSI150 1xz K S <sub>°</sub> /X			
Figure	Installation angle	Minimum wall thickness (mm)	Article code
<b>Slanted single wall insert S30°, z = number of columns</b>			
	30°	180	HSI150 1xz K S30°/X
<b>Slanted single wall insert S45°, z = number of columns</b>			
	45°	210	HSI150 1xz K S45°/X

Minimum thickness of 200 mm of concrete cover as per WU-Richtlinie (Merkblatt H10) is met in case of wall inserts HSI150 K S30° only by a minimum wall thickness of 350 mm (S45° – 400 mm).

HSI150 1xz K2 S <sub>°</sub> /X			
Figure	Installation angle	Minimum wall thickness (mm)	Article code
<b>Slanted double wall insert S30°, z = number of columns</b>			
	30°	240	HSI150 1xz K2 S30°/X
<b>Slanted double wall insert S45° z = number of columns</b>			
	45°	250	HSI150 1xz K2 S45°/X
<b>Slanted double wall insert S45°z = number of columns</b>			
	60°	300	HSI150 1xz K2 S60°/X

Minimum thickness of 200 mm of concrete cover as per WU-Richtlinie (Merkblatt H10) is met in case of wall inserts HSI150 K2 S30 only by a minimum wall thickness of 342 mm (S45° – 385 mm; S60° – 420 mm).

Article number, price and GTIN on request..