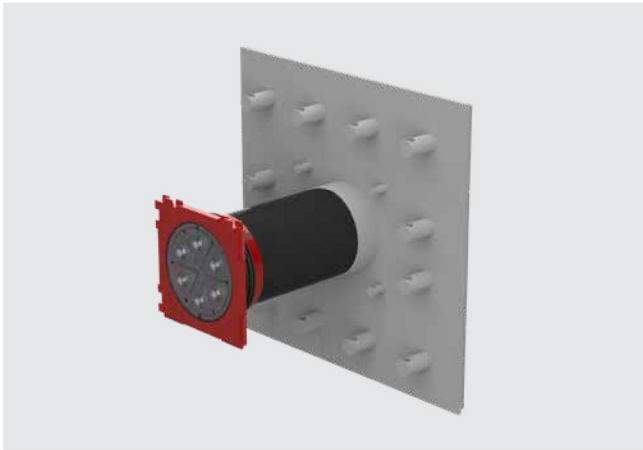


## WALL INSERTS AND POLYMER FLANGE

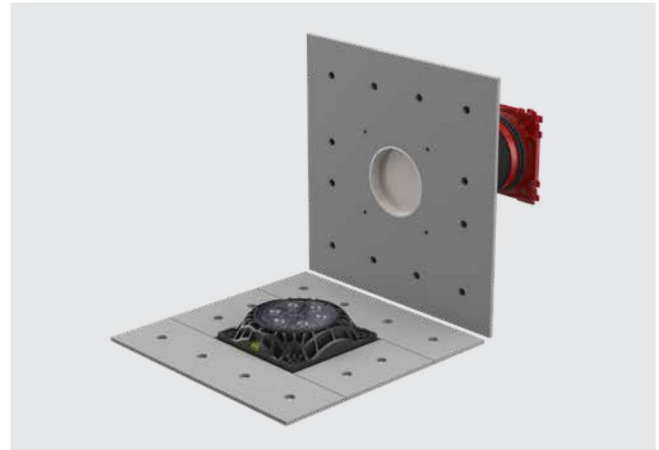
### DOUBLE WALL INSERT FOR SETTING IN CONCRETE, FOR BLACK TANK WITH FIXED/LOOSE FLANGE

**Features and technical data:**

- DIN 18533 W2.1-E, W2.2-E
- fixed/loose flange and attachment elements made of stainless steel A2 (AISI 304L) or A4 (AISI 316L)
- sealing flange made of polymer as a connection for system seal
- available as a package with multiple entries arranged horizontally or vertically
- axial spacing in package configuration 250 mm per additional duct



double wall insert HSI150 1x1 FLFE/X for setting in concrete (back)



double wall insert HSI150 1x1 FLFE/X (front view). Fixed/loose flange for setting in concrete with sealing flange for connecting system seal.

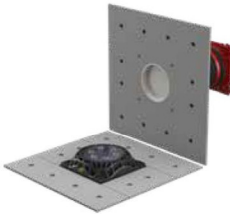





concreted fixed flange of the double wall insert HSI150 2x2 FLFE/X

Cable entries 150

## WALL INSERTS AND POLYMER FLANGE

Cable entries

HSI150 FLFE/X – DOUBLE WALL INSERT	
Figure	Article code
Fixed/loose flange wall sleeve, galvanized for setting in concrete for black tank HSI150 Yxz FLFE/X Y = number of rows, z = number of columns, X = wall thickness (mm)	
	Individual**
HSI150 1x1 FLFE/X, Y = 1, z = 1, X = individual	
	HSI150 1x1 FLFE/X*
HSI150 1x2 FLFE/X, Y = 1, z = 2, X = individual	
	HSI150 1x2 FLFE/X*
HSI150 1x3 FLFE/X, Y = 1, z = 3, X = individual	
	HSI150 1x3 FLFE/X*

\* Article number, price and GTIN on request.

\*\*Available as a package with multiple entries arranged horizontally or vertically, on request.