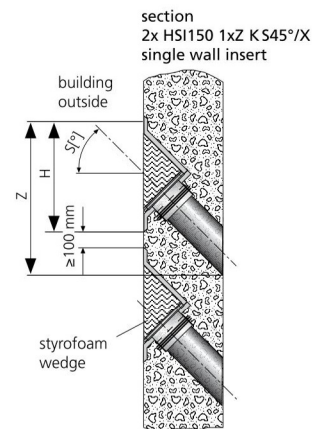


WALL INSERTS AND POLYMER FLANGE

SLANTED SINGLE WALL INSERT FOR SETTING IN CONCRETE

Features and technical data:

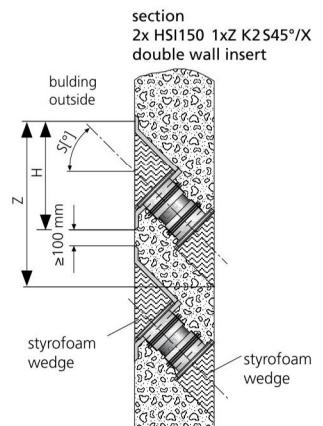
- waterproof concrete stress class 1, waterproof concrete stress class 2
- for inclined building entry in all directions for an optimum bend radius
- can be customised for individual wall thickness
- system covers and seals can be connected on one side
- packages can be created ex works (single row)
- 2.5 bar pressure-tight right after concreting



SLANTED DOUBLE WALL INSERT FOR SETTING IN CONCRETE



Features and technical data:

- waterproof concrete stress class 1, waterproof concrete stress class 2
- for inclined building entry in all directions for an optimum bend radius
- can be customised for individual wall thickness
- system covers and seals can be connected on both sides
- packages can be created ex works (single row)
- 2.5 bar pressure-tight right after concreting






Cable entries 150

WALL INSERTS AND POLYMER FLANGE

HSI150 1xz K S _° /X			
Figure	Installation angle	Minimum wall thickness (mm)	Article code
Slanted single wall insert S30°, z = number of columns			
	30°	180	HSI150 1xz K S30°/X
Slanted single wall insert S45°, z = number of columns			
	45°	210	HSI150 1xz K S45°/X

Minimum thickness of 200 mm of concrete cover as per WU-Richtlinie (Merkblatt H10) is met in case of wall inserts HSI150 K S30° only by a minimum wall thickness of 350 mm (S45° – 400 mm).

HSI150 1xz K2 S _° /X			
Figure	Installation angle	Minimum wall thickness (mm)	Article code
Slanted double wall insert S30°, z = number of columns			
	30°	240	HSI150 1xz K2 S30°/X
Slanted double wall insert S45° z = number of columns			
	45°	250	HSI150 1xz K2 S45°/X
Slanted double wall insert S45°z = number of columns			
	60°	300	HSI150 1xz K2 S60°/X

Minimum thickness of 200 mm of concrete cover as per WU-Richtlinie (Merkblatt H10) is met in case of wall inserts HSI150 K2 S30 only by a minimum wall thickness of 342 mm (S45° – 385 mm; S60° – 420 mm).

Article number, price and GTIN on request..