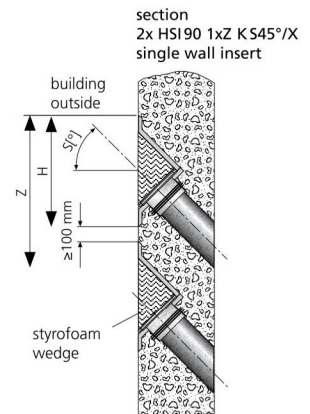


## WALL INSERTS AND ALUMINIUM FLANGE

### SLANTED SINGLE WALL INSERT FOR SETTING IN CONCRETE

#### Features and technical data:

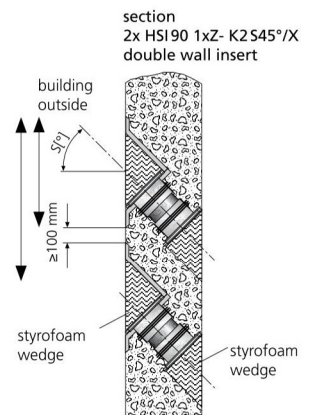
- waterproof concrete stress class 1, stress class 2
- for inclined building entry in all directions for an optimum bend radius
- can be customised for individual wall thickness
- system seal can be connected on one side
- packages can be created ex works (single row)
- 2.0 bar pressure-tight right after concreting





### SLANTED DOUBLE WALL INSERT FOR SETTING IN CONCRETE

#### Features and technical data:

- waterproof concrete stress class 1, stress class 2
- for inclined building entry in all directions for an optimum bend radius
- can be customised for individual wall thickness
- system seal can be connected on both sides
- packages can be created ex works (single row)
- 2.0 bar pressure-tight right after concreting






## WALL INSERTS AND ALUMINIUM FLANGE

<b>HSI90 1xz K S<sub>°</sub>/X</b>			
Figure	Installation angle	Minimum wall thickness (mm)	Article code
<b>Slanted single wall insert S30°, z = number of columns</b>			
	30°	190	<b>HSI90 1xz K S30°/X</b>
<b>Slanted single wall insert S45°, z = number of columns</b>			
	45°	200	<b>HSI90 1xz K S45°/X</b>

Article number, price and GTIN on request..

X = wall thickness (mm)

Minimum thickness of 200 mm of concrete cover as per WU-Richtlinie (Merkblatt H10) is met in case of wall inserts HSI90 K S30° only by a minimum wall thickness of 300 mm (S45° – 350 mm).

<b>HSI90 1xz K2 S<sub>°</sub>/X</b>			
Figure	Installation angle	Minimum wall thickness (mm)	Article code
<b>Slanted double wall insert S30°, z = number of columns</b>			
	30°	200	<b>HSI90 1xz K2 S30°/X</b>
e.g. HSI90 1x3 K2 S45°			
<b>Slanted double wall insert S45° z = number of columns</b>			
	45°	210	<b>HSI90 1xz K2 S45°/X</b>
e.g. HSI90 1x3 K2 S45°			
<b>Slanted double wall insert S60° z = number of columns</b>			
	60°	220	<b>HSI90 1xz K2 S60°/X</b>
e.g. HSI90 1x3 K2 S45°			

Article number, price and GTIN on request..

X = wall thickness (mm)

Minimum thickness of 200 mm of concrete cover as per WU-Richtlinie (Merkblatt H10) is met in case of wall inserts HSI90 K2 S30° only by a minimum wall thickness of 298 mm (S45° – 335 mm; S60° – 360 mm).